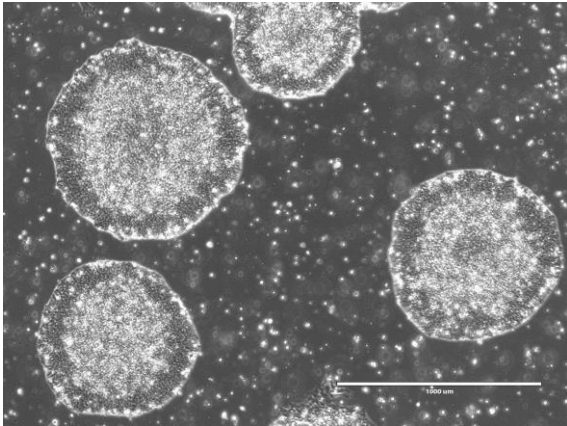
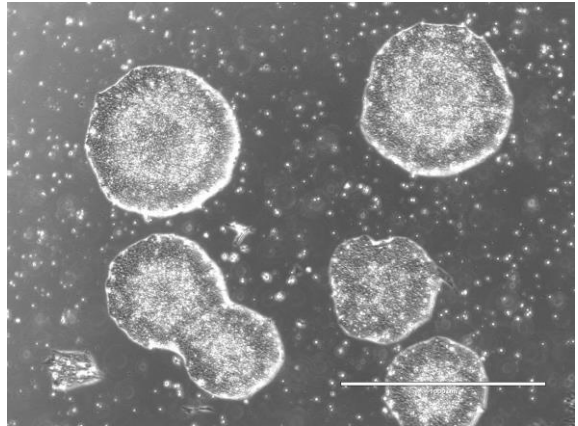


【 CiRA-j-1257 】 Morphology of iPSC colonies

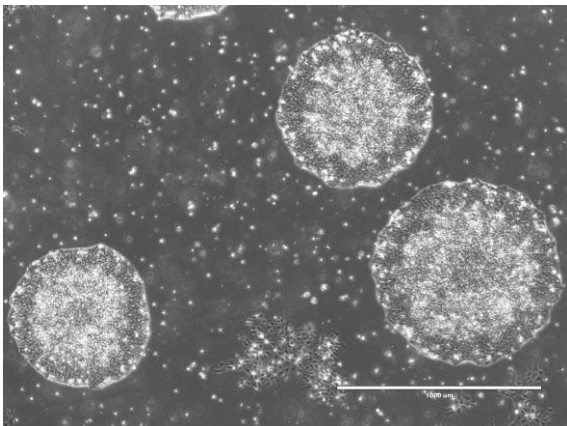
CiRA-j-1257-A: passage-3



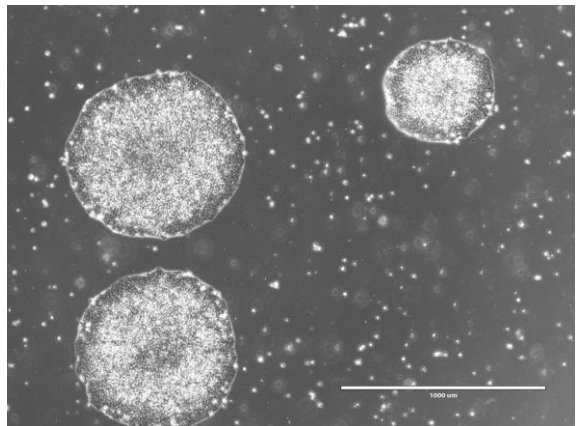
CiRA-j-1257-B: passage-3



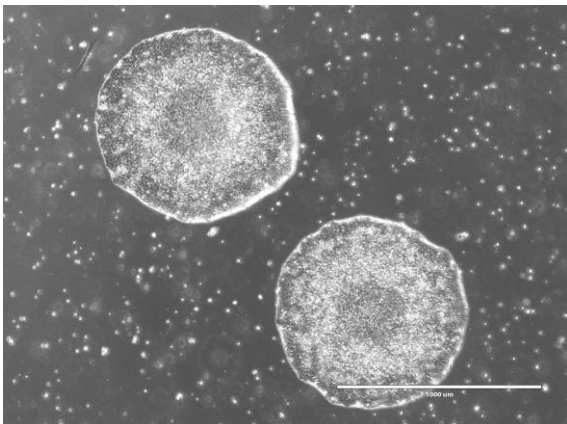
CiRA-j-1257-C: passage-3



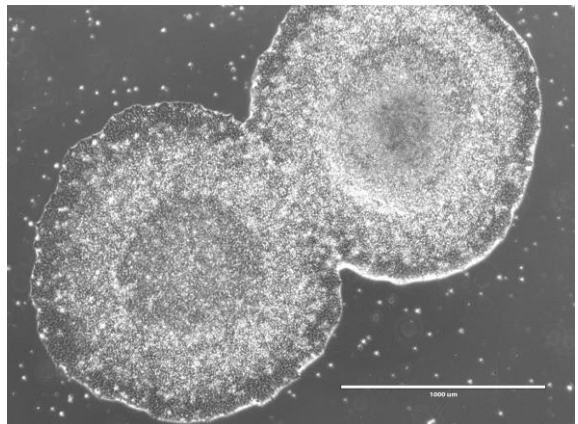
CiRA-j-1257-D: passage-3



CiRA-j-1257-E: passage-3



CiRA-j-1257-F: passage-3



(All images were captured at 4x magnification)